



THE POLYCARBONATE
STORE



EVOLUTION CANOPY SYSTEM

Installation guide

Tools Required

- Power Drill/Driver
- HSS Drill Bits – 3mm/7mm/8mm
- Masonry Drill Bits – 6mm/8mm
- Silicone Gun
- Spirit Level, Mallet & Hammer
- Step Ladders

Items Supplied

- Star Drive Bit
- Posi Drive Bit
- Silicone Sealant
- Fixings
- GutterGrid

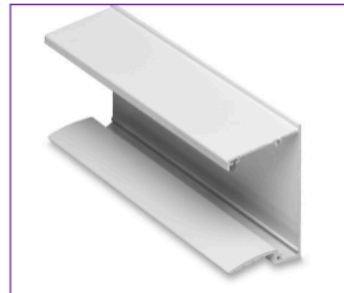
Canopy Components



Glazing Bar



End Bar



Wall Plate



Eaves Beam/Gutter



Sheet End Trim



Canopy Post (Leg)

Prior to Installation, please ensure the following conditions have been met:

- The host wall and base should be made of a sound construction, suitable for fixing this system into position.
- Base for canopy posts should be of a solid concrete construction
- Fixings provided must be checked for suitability to your application before proceeding with installation.

We recommend the canopy is installed by two people due to the size and weight of certain components.

Eaves Beam/Gutter preparation



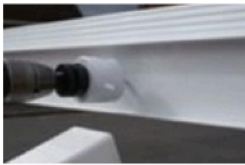
Step 1.0 | Apply a bead of silicone sealant to the edge of the eaves/beam gutter.



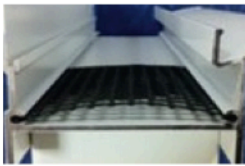
Step 1.1 | Fix the end cap to the end of the eaves/ beam gutter using the self tapping screws and cover cap provided. Wipe off excess silicone from outside edge.
NB do not fit screw "X" as this is fitted later.



Step 1.2 | Once the end caps are fitted, apply another bead of silicone to the inside edge.



Step 1.3 | Determine and mark the position of the post legs on the underside of the eaves/ beam gutter. Select the drainage post/s and drill a central 40mm hole.
NB. Alternatively a series of small holes can be drilled in a circular pattern to achieve the same result.



Step 1.4 | To ensure leaves and debris do not block the water outlet, install a small section of gutter grid as per diagram. This can be fixed into position using a small bead of silicone if required.



Step 1.5 | Once the pilot hole has been drilled permanently fix post/s into position using two self tapping screws per side. Ensure legs are square to eaves beam before screws are fitted.

Wall Plate Preparation

Step 2.0 | Determine the pitch required using the table provided on page 5, then measure and mark the host wall at the correct height.



Step 2.1 | Using a 7mm HSS drill bit pre-drill the wall plate 100mm from the edge. Equally space the remaining fixing points along the wall plate and drill. We recommend minimum one fixing per glazing bar along the wall plate.



Step 2.2 | Apply a bead of silicone to the back of the wall plate. Offer up the wall plate to the wall and drill and fix the first hole into the wall using the 6mm masonry bit and fixings provided. NB fixings supplied are to be fixed into the brickwork with no plug. Do not fix into mortar joint.



Step 2.3 | Ensure the wall plate is level and fit remaining fixings and cover caps. Apply a bead of silicone to the top edge of the wall plate to form a watertight seal.

NB all measurements shown are the height to underside of the wall plate

NB the dimensions are for standard 2.25m posts. For 3m posts add 750mm to the dimensions.

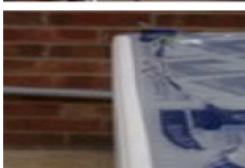
Erecting The Canopy



Step 3.0 | The two edge bar profiles are to be fixed onto the wall plate and eaves beam using the self tapping screws provided. Use one screw at either end of the bar at this point to allow movement for squaring up later in the procedure.



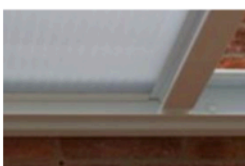
Step 3.1 | The drill guide lines on the underside of the wall plate and eaves beam denote the degree of pitch, reading from the host wall from 5 through to 20 degrees. (5 degree wall plate fixing shown opposite). **The correct selection of angle is vital to the installation.**



Step 3.2 | Fit the pvc sheet end closure centrally to both ends of the polycarbonate panels. **NB the printed film on the panels denotes the top sun (outer) side. The perforated foil tape should be at the gutter end of the roof. Closure fitted with drain holes to the underside.**

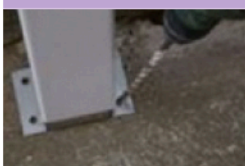


Step 3.3 | Engage the edge of the first polycarbonate panel into the edge bar and push the panel in firmly leaving a 5mm gap for poly expansion. Then select a glazing bar and continue across the roof, again leaving a 5mm expansion gap. Ensure the bar is then fully engaged into the wall plate. **NB do not secure any of the glazing bars at this point.**

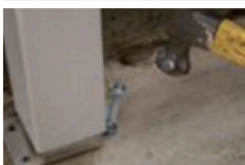


Step 3.4 | Repeat the bar fitting procedure with all the remaining panels and glazing bars until one panel remains. Now remove the edge bar to allow access of the last panel and then refit. Structure now needs to be squared up. PVC end closures should be flush to wall plate. Now secure all glazing bars using two screws at both ends of each bar.

Fixing Posts



Step 4.0 | Once the structure is square, level the posts in both directions using a spirit level. Drill the concrete pad using an 8mm masonry bit and fix post brackets to the concrete base using the stud anchors supplied.



Step 4.1 | Hammer in fixings and tighten with a 13mm spanner. Check fixings are secure for your base.

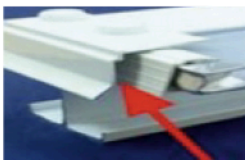


Step 4.2 | Level the gutter by adjusting the post over the foot bracket. Once the desired position is achieved, secure using two screws & caps either side of the post.

Fitting Sheet Edge Trim



Step 5.0 | Apply a bead of silicone to the leading edge of the pvc sheet end closure at the gutter end of the canopy to ensure it is sealed onto the glazing material.



Step 5.1 | Position the sheet edge trim profile on top of the glazing bar ends leaving a 10mm gap for water drainage at the end of the sheet. The trim should be fixed down by using screw and caps provided and a bead of silicone applied where the cap sits on top of the bars. A small amount of sealant on top of each screw head is also recommended.



Step 5.2 | Using the screws and caps supplied. Use the sight line on the glazing bars to determine drill position. Use one screw per end bar and two per glazing bar.



Step 5.3 | Apply a bead of silicone in front of the edge trim over the glazing bar. Fix screw "X" into position (see step 1.1) and fit wall plate end caps.
This now completes the installation of the canopy.

PITCH	PROJECTION	1500MM	2000MM	2500MM	3000MM	3500MM	4000MM
5		2417MM	2460MM	2504MM	2547MM	2591MM	2634MM
10		2543MM	2630MM	2717MM	2804MM	2890MM	2977MM
15		2665MM	2795MM	2924MM	3054MM	3183MM	3312MM
20		2784MM	2955MM	3126MM	3297MM	3468MM	3639MM




Based upon standard 2.25m post lengths and including 20mm for foot brackets. Add 750mm for the 3m post upgrade where applicable.

Disclaimer

The manufacturer accepts no responsibility for any injury or consequential losses caused by the use of unsuitable fixings or by installation of the product in any way that differs from that described herein. If in any doubt seek appropriate assurance from a qualified structural engineer on suitability of this product to your application before proceeding with installation. Evolution canopies are designed to withstand a loading of 600 N/m² which is suitable for most domestic applications in the United Kingdom. If you are installing the canopy in an exposed location please call your supplier to ask about increased loading specifications.

Please refer to www.molan-uk.com for a downloadable colour version of the fitting instructions.



-  0116 3090 123
-  sales@thepolycarbonatestore.co.uk
-  www.thepolycarbonatestore.co.uk